



**IN
STOCK!**

An elite and limited offering to select mining companies...

REMANUFACTURED EXCHANGE PROGRAM

On the following updated, proven, and time tested Caterpillar models:

Rigid Frame Trucks

CAT 777D
CAT 785C
CAT 789C
CAT 793C

Crawler Tractors

CAT D9R/T
CAT D10R/T
CAT D11R/T

Wheel Loaders

CAT 988H
CAT 992D
CAT 994

Motor Graders

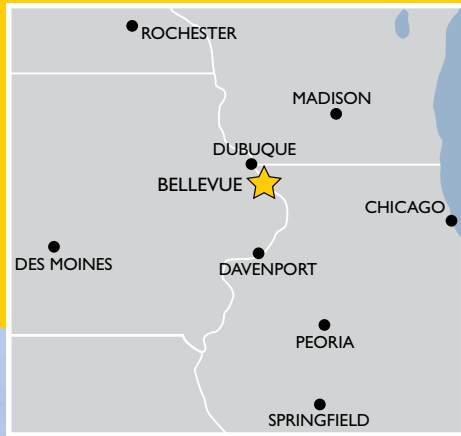
CAT 16H
CAT 24H



*The highest quality, most complete, most detailed,
proprietary Reman Program in the world.*

Call 563.872.4112
Email reman@jjscheckel.com

J.J. Scheckel Corporation
Scheckel Series Reman
21582 Hwy 62, Bellevue, IA 52031
www.jjscheckel.com



J.J. Scheckel Corporation- **World Class Quality**



Who We Are

J.J. Scheckel is an American-owned small business; we are located in the heartland of America just 2 hours from Caterpillar's world headquarters. We have a dedicated staff located in our Bellevue, Iowa facility that carry out our remanufacturing activities.

Mr. Josh Scheckel (pictured left with wife, Angie) is the founding principal and current CEO of J.J. Scheckel Corporation. J.J. Scheckel Corporation sells, rents, and services construction equipment to companies nationwide. SSR is a separate division created to deliver the world's highest quality remanufactured Caterpillar products available.

J.J. Scheckel and SSR are not affiliated with Caterpillar Corporate, although J.J. Scheckel does work with a select group of authorized Caterpillar dealers.

Awards

This Global Iowa Excellence in Exporting Award (left) was presented to J.J. Scheckel Corporation. Global Iowa Export Awards are presented by the Iowa Economic Development Authority (IEDA) in recognition of companies that are expanding their markets internationally. Recipients are chosen based on their achievements and commitment to exporting as a component of their business strategy.

Josh Scheckel was also awarded a Certificate of Recognition from the Iowa House of Representatives, extending their congratulations for receiving the Global Iowa Award and acknowledging J.J. Scheckel's innovation, success, and global-thinking.



Location

J.J. Scheckel Corporation is located on America's largest inland waterway, the Mississippi River, with close proximity to Caterpillar World Headquarters; this allows us to utilize not only parts logistics, but supplier and manufacturing resources as well.



Yellow dots mark mining companies around the world, with major U.S. shipping ports in red.

“Our highly-trained and experienced reman technicians are experts in the process; these are true craftsmen that care deeply about building quality machines.”





An Introduction to Remanufacturing

Definition

Detailed, extensive rebuilding, repairing, and restoring of a machine to meet or exceed Original Equipment Manufacturer's (OEM) performance specifications.

Qualifying Factors

To meet the "remanufactured" definition, these machines must undergo significant processing further, and more detailed, than would ever be required in a normal "rebuild" process. These machines are thus restored to a much higher degree and are intended to operate as good, or better than when the product was originally manufactured new, with a warranty to match.

While the basic concept of remanufacturing is simple, the activity is extremely complex. It requires that a used machine be completely disassembled to the bare castings, in order to assess its actual condition down to the very last element. Each step in this process is essential to the entire concept of remanufacturing and careful precautions must be taken to ensure that each step is carried out correctly. J.J. Sheckel has developed proprietary systems and procedures for these extremely time consuming and complex tasks.

The SSR Designation

A machine remanufactured by J.J. Sheckel, that carries the "SSR" designation, has all of the major systems and components replaced or restored to as-new condition. J.J. Sheckel's proprietary, performance-driven reman process leaves absolutely nothing to chance. Combining decades of engineering expertise, coupled with a deep, on-site, real-world applications understanding, we produce the exact machine and specifications you need for another economic and useful life cycle. Each remanufacturing contract encompasses the replacement and/or restoration of all major and minor systems and components to like-new condition - at a fraction of the cost of new. And the savings continue as we utilize the existing frame, and bare castings and forging originally manufactured for the machine. If you are considering remanufacturing an existing machine, or are having a hard time justifying a new piece of equipment, give J.J. Sheckel a call. Our combination of experience, innovation, and leading-edge engineering ensures the right solution for you.

“Sheckel Series Reman... the highest quality, most complete, most detailed reman program anywhere in the world.”



Reman Mining Solutions

- Reliability
- Uptime
- Familiarity
- Lowest Cost Per Ton
- Component Availability
- Timed Exchange Program



“Commitment to the highest level of quality.”



The SSR Advantage

The Highest Class Reman in the World

Lowest total cost of ownership.

Our proven cost of ownership simply can not be beat when compared to similar machines. Our business runs efficient; we pass the savings on to our customers. While buying reman, our customers have all the benefits of a new machine at half the cost.

Same, or better, machine production levels as new.

By operating reman machines over new or used, you will achieve the highest level of production for your money. SSR machines are designed to give the longevity and reliability you would expect from a new machine, while maintaining the very same, or better, production levels. This is achieved by using proven, field-tested machine models to remanufacture, integrated with the latest engineering upgrades available.

Lower cost than buying a new machine.

Reman machines can be purchased at a much lower cost than new, with more options available on a reman machine than on new. Some options include blade type, along with any rear attachment available, plus many safety and custom options are available. Reman machines represent the best value on the market.

Environmental.

Remanufacturing helps conserve our natural resources and uses only 20% of the energy needed to manufacture a new product. Core products are put back on the market to achieve another useful life. Besides the cost effectiveness, remanufacturing has very positive environmental impacts.

Flexible Financing Packages.

We have many buying options to meet our customer's needs. Customers may have prearranged financing in place, if not, we can offer attractive financing or leasing options. Please tell us your requirements, we will work with you to ensure the proper method to meet your needs and goals.

First Class Warranty.

We believe customers deserve a fast, hassle-free warranty policy. To back up our beliefs, we use franchised Caterpillar dealers to service our warranties. Cat dealers have the specialized tools and knowledge to get you up and running fast. Parts are also available within 24 hours.

“Clean, Contamination-Free Assembly”

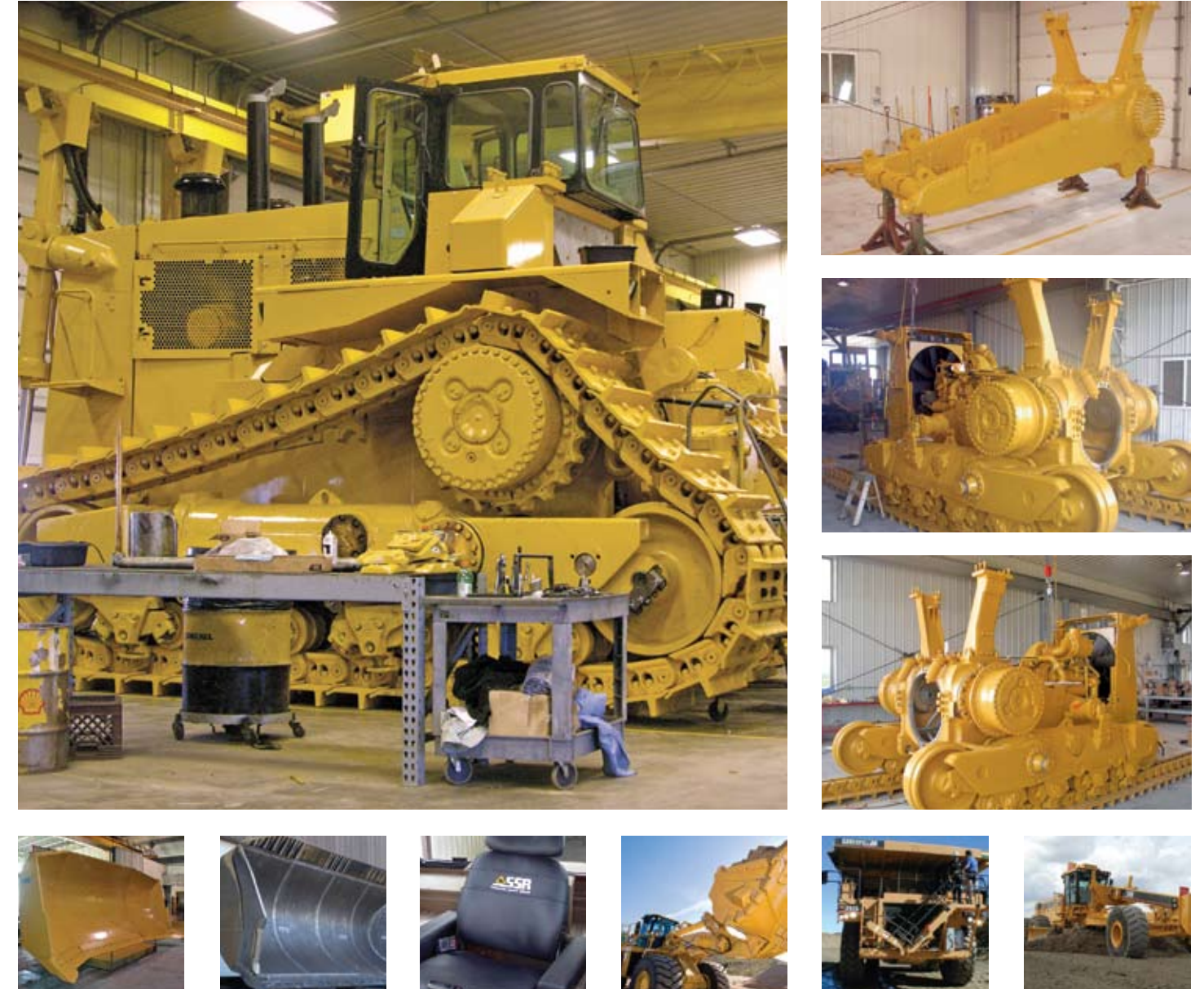
SSR Reman The Process

We can't divulge a lot of detail about our process due to proprietary techniques. Be assured that there is no other company in the world that works harder than we do. We work with ISO 9110 Qualified Partners in our process, which includes:

- X-Ray examination of critical parts that meet reusability guidelines.
- Cleaning is done utilizing ultrasonic, high-pressure sand blasting to strip parts.
- Machining is performed by partners using CNC accuracy.
- Reused parts undergo a multitude of tests. We automatically replace thousands of parts with new.
- We heat treat and stress relieve fatigue castings using ultra high tech procedures.
- We utilize ultra high wear castings where applicable.
- We ultrasonic test frames and welds for supportive cracks.
- Our process of powder coating parts is far superior than factory's wet coat technology.
- We utilize only OEM Replacement parts and high pressure hoses.



“Highest Quality Process in the World”



Field Support

Ongoing Product Improvement & Upgrades



We continually strive for product improvement and look for areas to upgrade on the specific model machines we remanufacture. We can sell machines to anyone- we are looking for partners and feedback from our customers. We field-follow every machine we reman.

We offer same-day shipping on exchange components. We stock all major components on the line of machines we remanufacture. We are ready and prepared to ship replacement components at a moment's notice.

If your company does not perform your own day-to-day maintenance and repair operations, we highly suggest utilizing your local OEM Caterpillar dealer. They are well equipped and ready to serve you in the field. We form alliances with many dealers and feel they are best suited to serve you on-site. We also work with OEM dealers to gather field data on product improvement opportunities. Our company does conduct on-site visits and field-follows to monitor machine health on a scheduled time frame. We are committed to supporting our customers from cradle to grave and helping them succeed.

“ We Are a Preferred Exporter ”



Worldwide Financing

Any customer located in the free world can finance their reman machine order through our company. We partner with the Export-Import Bank of the United States and provide terms and rates that are hard to beat. The U.S. EXIM Bank supports our business and our machines and has allowed us to extend that support to all foreign companies that qualify. If you are under budget constraints or seeking short-term or long-term capital borrowing, we can help.



Worldwide Logistics



“ Our company employees travel worldwide, to commission and reassemble the reman machines on your job site. ”



Our Golden Key

Our facility is located right on the largest inland waterway in America, the Mississippi River. We are contracted with barge operators to load out and deliver mining machines fully assembled to southern U.S. ports at a fraction of the cost of any other method, saving hundreds of thousands of dollars for customers nationwide. We coordinate and handle these logistics and delivery to any free port in the world. In a package of four Caterpillar 793 mine trucks, this ability has saved over \$400,000 in shipping costs alone.



*(right, top 3 and middle photos)
D11R Reassembly in Australia*

*(right, bottom 2 photos)
D9R Assembly in Africa*





It's Easy Doing Business With Us!

You→1. Initiate

Email reman@jjscheckel.com, Fax 563.872.5058, or Call 563.872.4112 with your need or request.

Us→2. Company Verification

We do not openly quote over the phone, we first need to validate your company and your specific requests.

Us→3. Quote

We will provide an informal quote, availability, lead time, and logistics.

You→4. Look Over and Advise

Us→5. Formal Paperwork and Contract

We will provide you with all formal paperwork and a contract, including guaranteed lead times and logistical information.



Requirements of all Buyers

1. No brokers involved. We sell direct to end users or agents working directly with end users, or we sell through OEM Caterpillar dealers only.
2. All relevant company information must be provided to us before we can quote any of our products.
3. When purchasing our reman machines we are expecting complete core machines of the same model in return. We will take into consideration and circumstance if you can not provide us with cores of the same model. We would either then sell you reman machines outright, with a core charge added, or approve the trade or exchange of another model.
4. A Caterpillar-Sponsored Warranty Insurance, supplied by us, may or may not be honored by your local authorized Cat Dealer. The participation of your local Caterpillar dealer is dependant on them. Please call us for additional warranty information, 563.872.4112.



Reman Exchange

Please remember, we are in the reman exchange business. We do sell individual machines outright from time to time, but most generally we are looking for exchange opportunities. For example, we provide and deliver four reman trucks to you and back haul four high-hour or core trucks to our facility. This can be a one time exchange or we can set you up on a timed exchange program.

FAQ

Frequently Asked Questions

Does a new machine really provide the lowest cost of ownership?

Remanufacturing will save anywhere from 30 to 50% of the cost of a new machine. You'll save months of profitable production. Remanufacture takes far less time than new machine delivery. You don't need a huge capital outlay in a period of rising economic risk. The money is saved by re-using the original castings and non-wearable items originally manufactured for the machine.

Further savings can be had by segmenting the reman costs on your invoice- your accounting team then may be able to write off up to 90% of the total machine cost as tax deductible, as rebuilding costs can usually be written off as an expense rather than a capital expenditure. We recommend you take the advice of your financial professional regarding this, which may vary based on location.

The lowest total cost of ownership can only be calculated after it happens. We have proven time and again that we can provide better reliability, and better production than a new machine, all while maintaining a lower total cost of ownership.

Is Scheckel Series Reman affiliated with Caterpillar Corporate?

Scheckel Series Reman is not affiliated with Caterpillar in any way. SSR is a private specialized company focused on one goal - to provide the highest level machine reman program in the world. We are a customer of Caterpillar. We believe genuine OEM Caterpillar parts are best suited for our process. We believe Caterpillar engineering is by far superior to anything else. We do have alliances with several Caterpillar dealers throughout the world that are customers of ours.

What is the main difference between Caterpillar's "Certified Rebuild" and the SSR reman program?

Both programs are similar, but there are a few different aspects of each. Caterpillar's "Certified Rebuild" branded machines are done only by franchised Caterpillar dealers. There are few Cat dealers in the world that rebuild machines from the bare frame up on a full-time basis. Rarely are the same technicians used on every rebuild, and the franchised dealer's extremely high overhead costs get rolled into the machine they are rebuilding.

The SSR Program is carried out by the same technicians, on a full-time basis, every day of every year. There is no one in the industry that can rival that. The SSR procedure has been developed into a quality systems magnitude that out-performs all. The SSR program leaves absolutely nothing to chance; every single part is broken down individually and replaced with new or remanufactured. SSR also documents every machine with hundreds of pictures and data information that is available to all customers. The SSR team is a smaller, more specialized organization, with only one focus- that is to continue building the best reman machines in the world, that ultimately lowers our customer's owning and operating expenses. There is no one company in the world that comes close in terms of value-based pricing. You simply get more for your money with SSR.



Want more information? Ready to order?
Contact us today!



J.J. Scheckel Corporation
Josh Scheckel
21582 Highway 62
Bellevue, Iowa 52031

Ph: 563.872.4112
Fax: 563.872.5058
reman@jjscheckel.com
www.jjscheckel.com

“ [2 D9R Scheckel Series Reman] Dozers on site and assembled, we are very happy with them and would like to extend our appreciation to you and all your team who were involved in the rebuild of these machines. ”

Clem Cox, Mineral Deposits-Grand Cote Operations, Senegal, Africa. Photo above.



Call 563.872.4112
Email reman@jjscheckel.com

the classic machines...

REMANUFACTURED CATERPILLAR EQUIPMENT

- Time tested and proven
- Productive
- Service familiarity
- Less complications
- Basic designs
- Lowest cost per ton
- 50-60% Cost of new
- Upgraded with latest improvements

In production now on the following updated, proven, and time tested Caterpillar models:

Rigid Frame Trucks

CAT 777D
CAT 785C
CAT 789C
CAT 793C

Crawler Tractors

CAT D9R/T
CAT D10R/T
CAT D11R/T

Wheel Loaders

CAT 988H
CAT 992D
CAT 994

Motor Graders

CAT 16H
CAT 24H